



KONICA MINOLTA

# bizhub C308

✓ Colour A3 multifunctionality

✓ Up to 30 pages per minute

## Functionality



Copying

- Colour
- Black & white



Printing

- Colour
- Black & white
- PCL/PS
- Local/Network
- USB
- Mobile



Scanning

- Colour
- Black & white
- Scan-to-eMail
- Scan-to-Me
- Scan-to-SMB

- Scan-to-Home
- Scan-to-FTP
- Scan-to-Box
- Scan-to-USB
- Scan-to-WebDAV

- Scan-to-DPWS
- TWAIN Network



Faxing

- Super G3 Fax
- PC-Fax
- i-Fax
- IP-Fax



Box

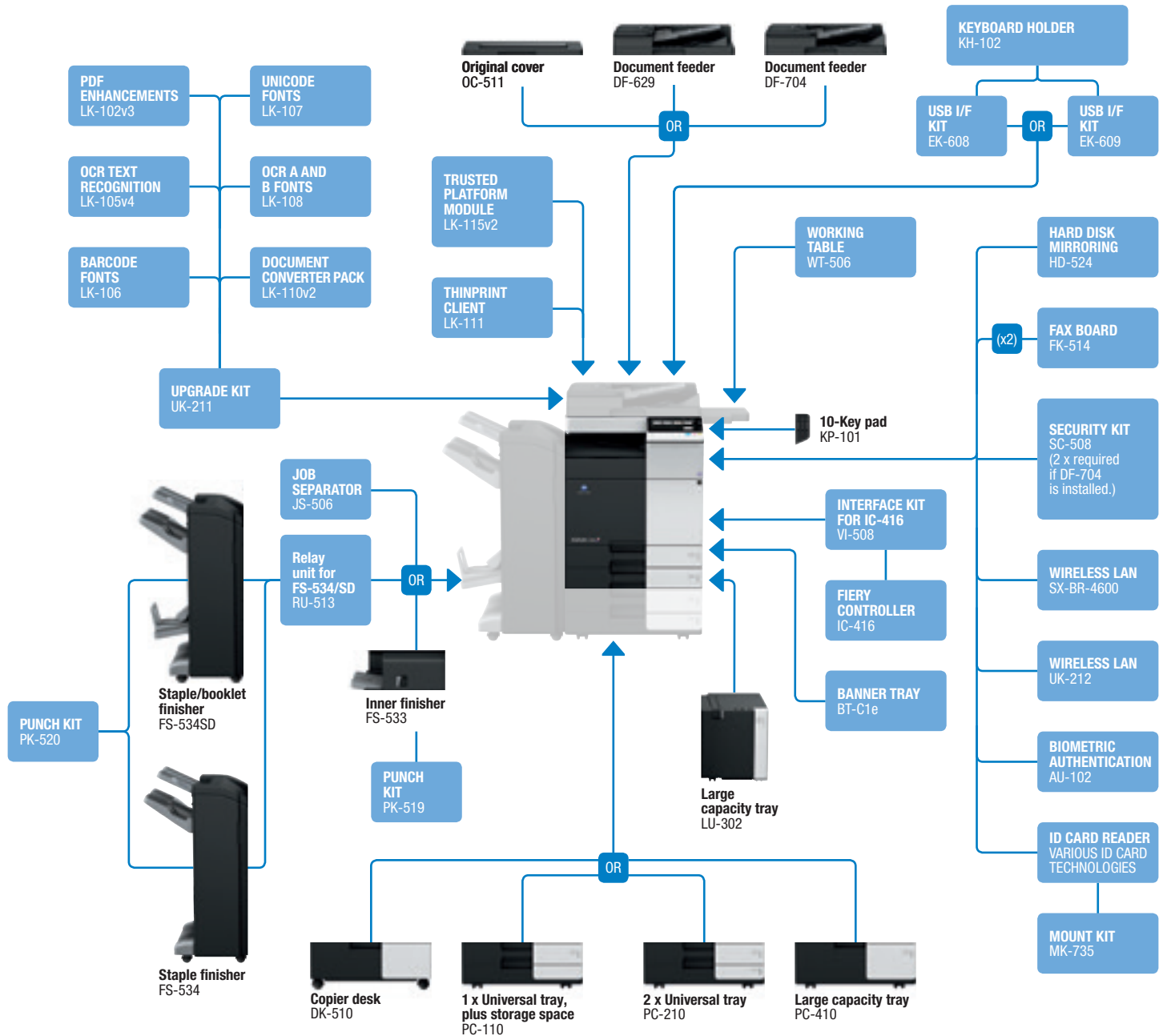
- Reprint
- Distribution
- Sharing
- Box-to-Box
- Box-to-USB



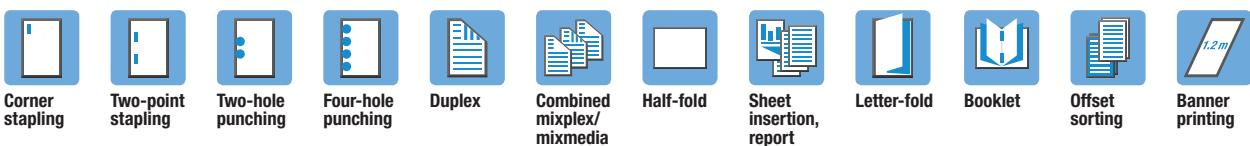
## Technology

Emperon™ – print controller	Easily compatible with different users and IT environments through Konica Minolta's unified print technology	✓
Simitri® HD – polymerised toner	Delivers high print quality and yet ensures reduced print spending as well as lower environmental impact	✓
OpenAPI – solution platform	Server-based applications provide efficient workflows for the entire MFP fleet	✓
i-Option – special feature	Offers extended scope and advanced MFP functionality in line with individual requirements	✓
CSRC – remote service	Keeps productivity up with online monitoring of devices and consumables through the Konica Minolta service	✓
IWS – panel customisation	Improved user-device interaction and enhanced productivity through full MFP panel customisation	✓

## Option diagram



## Finishing functionalities



## Descriptions

<b>bizhub C308</b>	A3 multifunctional with 30 ppm b/w and colour. Standard Emperon™ print controller with PCL 6c, PostScript 3, PDF 1.7 and XPS support. Paper capacity of 500 + 500 sheets and 150-sheet manual bypass. Media from A6 to SRA3, 1.2 m banner and 52 – 300 gsm. 2 GB memory, 250 GB hard disk and Gigabit Ethernet standard.
<b>DF-629 Document feeder</b>	Reversing automatic document feeder, capacity 100 originals
<b>DF-704 Document feeder</b>	Dualscan automatic document feeder, capacity 100 originals
<b>OC-511 Original cover</b>	Cover instead of ADF
<b>PC-110 1 x Universal tray</b>	A5–A3, 500 sheets, 52–256 gsm
<b>PC-210 2 x Universal tray</b>	A5–A3, 2 x 500 sheets, 52–256 gsm
<b>PC-410 Large capacity tray</b>	A4, 2,500 sheets, 52–256 gsm
<b>DK-510 Copier desk</b>	Provides storage space for print media and other materials
<b>LU-302 Large capacity tray</b>	A4, 3,000 sheets, 52–256 gsm
<b>FS-533 Inner finisher</b>	50-sheet stapling, 500 sheets max. output
<b>PK-519 Punch kit for FS-533</b>	2/4 hole punching, autoswitching
<b>FS-534 Staple finisher</b>	50-sheet stapling, 3,300 sheets max. output
<b>FS-534SD Booklet finisher</b>	50-sheets staple finisher, 20-sheets booklet finisher, 2,300 sheets max. output
<b>RU-513 Relay unit for FS-534/SD</b>	For FS-534/SD installation
<b>PK-520 Punch kit for FS-534/SD</b>	2/4 hole punching, autoswitching
<b>JS-506 Job separator</b>	Separation for fax output etc.

<b>KP-101 10-Key pad</b>	For use instead of touchscreen
<b>WT-506 Working table</b>	Authentication device placement
<b>FK-514 Fax board</b>	Super G3 fax, digital fax functionality
<b>IC-416 Fiery controller</b>	Professional colour print controller
<b>VI-508 Interface kit for IC-416</b>	Fiery controller interface card
<b>KH-102 Keyboard holder</b>	To place USB keyboard
<b>EK-608 USB I/F kit</b>	USB keyboard connection
<b>EK-609 USB I/F kit</b>	USB keyboard connection, Bluetooth
<b>ID card reader</b>	Various ID card technologies
<b>MK-735 Mount kit</b>	Installation kit for ID card reader
<b>AU-102 Biometric authentication</b>	Finger vein scanner
<b>SC-508 Security kit</b>	Copy Guard function (2 kits required if DF-704 is installed)
<b>HD-524 Hard disk mirroring</b>	Back-up HDD
<b>BT-C1e Banner tray</b>	Multipage banner feeding
<b>LK-102v3 PDF enhancements</b>	PDF/A (1b), PDF encryption, digital signature
<b>LK-105v4 OCR text recognition</b>	Searchable PDF and PPTX, PDF/A (1a)
<b>LK-106 Barcode fonts</b>	Supports native barcode printing
<b>LK-107 Unicode fonts</b>	Supports native Unicode printing
<b>LK-108 OCR A and B fonts</b>	Supports native OCR A and B font printing
<b>LK-110v2 Document converter pack</b>	Generates various file formats incl. DOCX, XLSX and PDF/A
<b>LK-111 ThinPrint® Client</b>	Print data compression for reduced network impact
<b>LK-115v2 TPM activation</b>	Trusted Platform Module for protection of data encryption and decryption
<b>UK-211 Upgrade kit</b>	2 GB memory extension for upgrades
<b>UK-212 Wireless LAN</b>	Wireless LAN and wireless LAN Access Point Mode
<b>SX-BR-4600 Wireless LAN</b>	Wireless LAN to network connector

## Technical specifications

### SYSTEM SPECIFICATIONS

<b>System memory</b>	2,048 MB (standard)
<b>System hard disk</b>	250 GB (standard)
<b>Interface</b>	10-Base-T/100-Base-T/1,000-Base-T Ethernet; USB 2.0
<b>Network protocols</b>	TCP/IP (IPv4 / IPv6); IPX/SPX; NetBEUI; AppleTalk (EtherTalk); SMB; LPD; IPP; SNMP; HTTP
<b>Frame types</b>	Ethernet 802.2; Ethernet 802.3; Ethernet II; Ethernet SNAP
<b>Automatic document feeder (optional)</b>	Up to 100 originals; A6–A3; 35–163 gsm
<b>Printable paper size</b>	RADF or Dualscan ADF available
<b>Printable paper weight</b>	A6–SRA3, customised paper sizes; banner paper max. 1,200 x 297 mm
<b>Paper input capacity</b>	52–300 gsm
<b>Tray 1</b>	Standard: 1,150 sheets Max.: 6,650 sheets
<b>Tray 2</b>	500 sheets, A5–A3, 52–256 gsm
<b>Tray 3 (optional)</b>	500 sheets, A5–SRA3, 52–256 gsm
<b>Tray 3 (optional)</b>	1 x 500 sheets, A5–A3, 52–256 gsm
<b>Tray 4 (optional)</b>	2 x 500 sheets, A5–A3, 52–256 gsm
<b>Large capacity tray (optional)</b>	2,500 sheets, A4, 52–256 gsm
<b>Large capacity tray (optional)</b>	3,000 sheets, A4, 52–256 gsm
<b>LU-302 (optional)</b>	500 sheets, A5–A3, 52–256 gsm
<b>Manual bypass</b>	150 sheets, A6–SRA3, custom sizes, banner, 60–300 gsm
<b>Automatic duplexing</b>	A5–SRA3; 52–256 gsm
<b>Finishing modes (optional)</b>	Offset; group; sort; staple; punch; centre-fold; letter fold; booklet
<b>Output capacity (with finisher)</b>	Max.: 3,300 sheets
<b>Output capacity (without finisher)</b>	Max.: 250 sheets
<b>Stapling</b>	Max.: 50 sheets or 48 sheets + 2 cover sheets (up to 209 gsm)
<b>Stapling output capacity</b>	Max. 1,000 sheets
<b>Letter fold</b>	Up to 3 sheets
<b>Letter fold capacity</b>	Max.: 30 sheets (tray); unlimited
<b>Booklet</b>	Max.: 20 sheets or 19 sheets + 1 cover sheet (up to 209 gsm)
<b>Booklet output capacity</b>	Max.: 100 sheets (tray); unlimited
<b>Copy/print volume (monthly)</b>	Rec.: 16,000 pages Max. <sup>1</sup> : 100,000 pages
<b>Toner lifetime</b>	Black 28,000 pages; CMY 26,000 pages

<b>Imaging unit lifetime</b>	Black 120,000 pages/600,000 pages (Drum/Developer) CMY 75,000 pages/600,000 pages (Drum/Developer)
<b>Power consumption</b>	220–240 V / 50/60 Hz Less than 1.5 kW (system)
<b>System dimensions (W x D x H)</b>	615 x 685 x 771 mm (excl. ADF and lower paper tray unit)
<b>System weight</b>	Approx. 85 kg

### COPIER SPECIFICATIONS

<b>Copying process</b>	Electrostatic laser copy, tandem, indirect
<b>Toner system</b>	Simitri® HD polymerised toner
<b>Copy/print speed A4 (mono/colour)</b>	Up to 30 ppm
<b>Copy/print speed A3 (mono/colour)</b>	Up to 15 ppm
<b>Autoduplex speed A4 (mono/colour)</b>	Up to 30 ppm
<b>1st copy out time (mono/colour)</b>	5.6 sec. 7.3 sec.
<b>Warm-up time</b>	Approx. 20 sec. <sup>2</sup>
<b>Copy resolution</b>	600 x 600 dpi
<b>Gradation</b>	256 gradations
<b>Multicopy</b>	1–9,999
<b>Original format</b>	A5–A3
<b>Magnification</b>	25–400% in 0.1% steps; auto-zooming
<b>Copy functions</b>	Chapter; cover and page insertion; proof copy (print and screen); adjustment test print; digital art functions; job setting memory; poster mode; image repeat; overlay (optional); stamping; copy protection

<sup>1</sup> If the maximum volume is reached within a period of one year, then a maintenance cycle must be performed

<sup>2</sup> Warm-up time may vary depending on the operating environment and usage

**PRINTER SPECIFICATIONS**

<b>Print resolution</b>	1,800 x 600 dpi; 1,200 x 1,200 dpi
<b>Page description language</b>	PCL 6 (XL 3.0); PCL 5c; PostScript 3 (CPSI 3016); XPS
<b>Operating systems</b>	Windows VISTA (32/64), Windows 7 (32/64) Windows 8 (32/64), Windows Server 2003 (32/64) Windows Server 2008 (32/64), Windows Server 2008 R2 Windows Server 2012, Windows Server 2012 R2 Macintosh OS X 10.x, Unix, Linux, Citrix
<b>Printer fonts</b>	80 PCL Latin; 137 PostScript 3 Emulation Latin
<b>Print functions</b>	Direct print of PCL, PS, TIFF, XPS, PDF (v1.7), encrypted PDF files and OOXML (DOCX, XLSX, PPTX); mixmedia and mixplex; "Easy Set" job programming; overlay; watermark; copy protection; carbon copy print
<b>Mobile Printing</b>	AirPrint (iOS), Mopria (Android), Google Cloud Print (optional), WiFi Direct (optional), Konica Minolta Print Service (Android), PageScope Mobile (iOS & Android); NFC Authentication and Pairing (Android)

**PRINTER SPECIFICATIONS (OPTIONAL)**

<b>Print controller</b>	Embedded Fiery IC-416
<b>Controller CPU</b>	Intel Pentium @ 2.9 GHz
<b>Memory/HDD</b>	2 GB/500 GB
<b>Page description language</b>	Adobe PostScript 3 (CPSI 3020) PCL 6/5
<b>Operating systems</b>	Windows VISTA (32/64), Windows 7 (32/64), Windows 8 (32/64), Windows Server 2003 (32/64) Windows Server 2008 (32/64), Windows Server 2008 R2, Windows Server 2012, Windows Server 2012 R2 Macintosh OS 9.x/10.x

**SCANNER SPECIFICATIONS**

<b>Scan speed (mono/colour)</b>	Up to 160 ipm (with optional DF-704)
<b>Scan resolution</b>	Max.: 600 x 600 dpi
<b>Scan modes</b>	Scan-to-eMail (Scan-to-Me), Scan-to-SMB (Scan-to-Home) Scan-to-FTP, Scan-to-Box, Scan-to-USB, Scan-to-WebDAV Scan-to-DPWS, Network TWAIN scan
<b>File formats</b>	JPEG; TIFF; PDF; PDF/A 1a and 1b (optional); compact PDF; encrypted PDF; searchable PDF (optional); XPS; compact XPS; PPTX; searchable DOCX/XLSX/PPTX (optional)
<b>Scan destinations</b>	2,100 (single + group); LDAP support
<b>Scan functions</b>	Annotation (text/time/date) for PDF; up to 400 job programs; real-time scan preview

**FAX SPECIFICATIONS**

<b>Fax standard</b>	Super G3 (optional)
<b>Fax transmission</b>	Analogue i-Fax Colour i-Fax (RFC3949-C) IP-Fax
<b>Fax resolution</b>	Max.: 600 x 600 dpi (ultra-fine)
<b>Fax compression</b>	MH; MR; MMR; JBIG
<b>Fax modem</b>	Up to 33.6 Kbps
<b>Fax destinations</b>	2,100 (single + group)
<b>Fax functions</b>	Polling; time shift; PC-Fax; receipt to confidential box; Receipt to e-mail/FTP/SMB; up to 400 job programs

**USER BOX SPECIFICATIONS**

<b>Max. storable documents</b>	Up to 3,000 documents or 10,000 pages
<b>Type of user boxes</b>	Public Personal (with password or authentication) Group (with authentication)
<b>Type of system boxes</b>	Secure print Encrypted PDF print Fax receipt Fax polling
<b>User box functionality</b>	Reprint; combination Download Sending (e-mail/FTP/SMB and Fax) Copy box to box

**SYSTEM FEATURES**

<b>Security</b>	ISO15408/IEEE 2600.1 compliant (in evaluation); IP filtering and port blocking; SSL2; SSL3 and TLS1.0 network communication; IPsec support; IEEE 802.1x support; user authentication; Authentication log; secure print; Hard disk overwrite (8 standard types); Hard disk data encryption (AES 256); Hard disk mirroring (optional); Memory data auto deletion; Confidential fax receipt; Print user data encryption; copy protection (Copy Guard, Password Copy) optional
<b>Accounting</b>	Up to 1,000 user accounts; Active Directory support (user name + password + e-mail + smb folder) User function access definition Biometric authentication (finger vein scanner) optional ID card authentication (ID card reader) optional
<b>Software</b>	PageScope Net Care Device Manager PageScope Data Administrator PageScope Box Operator PageScope Direct Print Print Status Notifier Driver Packaging Utility Log Management Utility

- All specifications refer to A4-size paper of 80 gsm quality.
- The support and availability of the listed specifications and functionalities varies depending on operating systems, applications and network protocols as well as network and system configurations.
- The stated life expectancy of each consumable is based on specific operating conditions such as page coverage for a particular page size (5% coverage of A4). The actual life of each consumable will vary depending on use and other printing variables including page coverage, page size, media type, continuous or intermittent printing, ambient temperature and humidity.
- Some of the product illustrations contain optional accessories.
- Specifications and accessories are based on the information available at the time of printing and are subject to change without notice.
- Konica Minolta does not warrant that any specifications mentioned will be error-free.
- All brand and product names may be registered trademarks or trademarks of their respective holders and are hereby acknowledged.





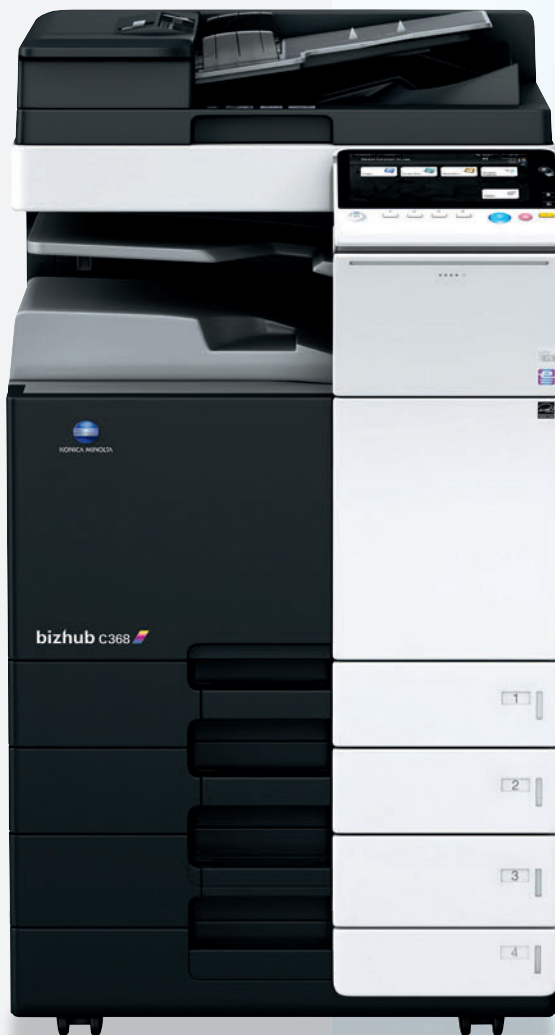
KONICA MINOLTA



# **bizhub**

## C368/C308/C258

# A3



**C368** **36** CL PPM **36** BW PPM

**C308** **30** CL PPM **30** BW PPM

**C258** **25** CL PPM **25** BW PPM

Giving Shape to Ideas



# MFP to always provide you a better way, a comfort way. That's what really matters.



## The simplicity and usability to fit in any working environment

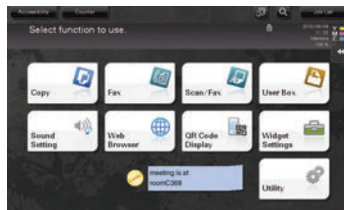
### The product design

The bizhub C368 series adopts the easy and intuitive INFO-Palette design and smart user interface. To ensure, to always provide the same user experience in any business situation through the seamless operation no matter from the PCs, tablets or smartphones.



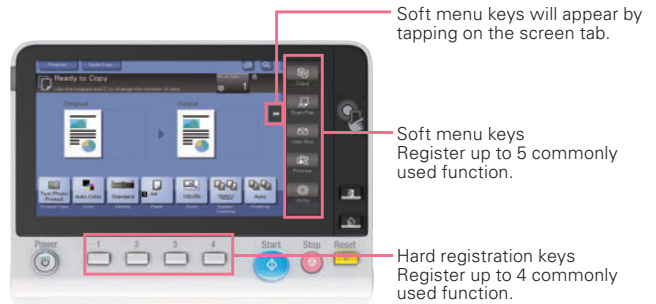
### Widgets function

Text boxes, icons, or GIF animations can be posted on the MFP operation panel like the sticky notes. These can be used to display office communications, MFP usage rules, or warnings.



### The 9 inch operation panel

The 9 inch operation panel provides user friendly interface and intuitive operability. 4 hard menu keys at the bottom of the panel and the on-screen soft menu keys can allow user to register up to 9 commonly used functions such as copy, scan/fax, preview or soft numeric keypad.



## Print from anywhere, anytime with the most advanced wireless, mobile and cloud connectivity

### To connect with Android devices

The new Mobile Touch Area on the operation panel is ready to support NFC (Near Field Communication) connection with Android\*1 devices.

Touch the area with Android device to perform pairing through the PageScope Mobile (PSM). Select files on the PSM, then touch the device to the operation panel to perform print\*2 or touch the device to the operation panel to perform scan\*2.



\*1 NFC connection requires Android OS 4.4 or higher to be installed.

\*2 Wireless LAN environment is required to perform touch to print and scan.

### To connect with iOS devices

For the iOS device, to search and register MFP nearby into the PageScope Mobile (PSM)\*3 via Bluetooth LE (BLE)\*4 technology. Additionally, iOS devices can be used to log-into MFP through BLE connection. Select files on the PSM to print\*5 directly from iOS devices or scan\*5 files directly to the iOS devices.

\*3 PageScope Mobile for iPhone/iPad version 5.0 or higher is required.

\*4 Optional Device Connection I/F Kit EK-609 is required.

\*5 Wireless LAN environment is required to perform print and scan.

### Wireless LAN (AP mode) support

The MFP becomes a wireless LAN Access Point\*6 to allow direct wireless connection between mobile devices and bizhub. Devices brought into the office will be able to directly connect with bizhub and are securely separated from existing company LANs.

PageScope Mobile will enable more convenient use, as wireless set up can be completed between a mobile device and bizhub simply by reading the QR code that is displayed on the machine panel.

\*6 Optional Upgrade Kit UK-212 is required.

### To connect instantly without print drivers to the industry standard mobile technologies

#### AirPrint

Apple's standard printing system compatible with iOS 4.2 and Mac OS 10.7 or later. A compatible printer on your wireless LAN can be used.



#### Mopria Print Service

Wireless printing technology provided by Mopria Alliance. Allows you to print from devices installed with Android 4.4 or later.



#### Google Cloud Print

With the compatible software installed, you can print from any locations via the internet regardless OS or device types.

\* Google Cloud Print Setup and Google account registration are required.

\* Optional Upgrade Kit UK-211 is required.



#### Konica Minolta Print Service

Print directly to bizhub via a wireless LAN from Android 4.4 or later installed devices.



#### PageScope Mobile

A genuine mobile print application offered by Konica Minolta. To allow usage of wide range of bizhub functions such as duplex print, security print, staple and punch.



### Standard web browser

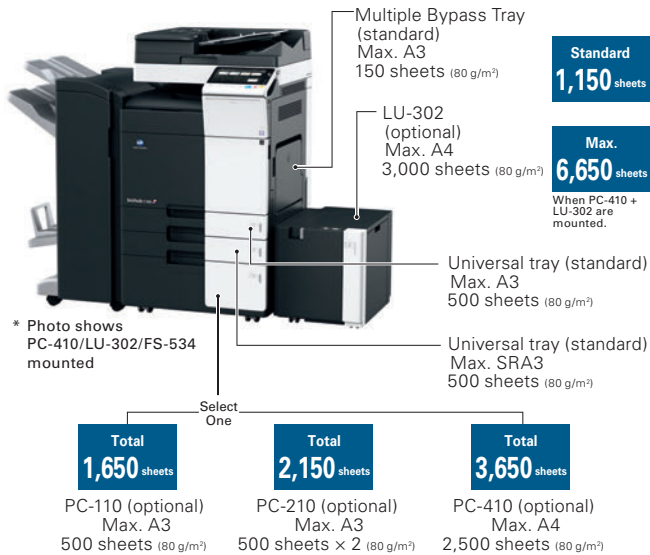
The multi-touch UI in the operational panel can be used to display and print out web page contents. It is convenient for print required portions of PDF files that can be viewed on websites, or to print maps for places you are about to visit.

## Built for steady performance, for workflow efficiency

### Plenty of paper feed options

The standard paper capacity of the MFP is 1,150 sheets. With the optional paper feed options, the paper capacity can be increased up to 3,650 sheet. The optional Large Capacity Unit will bring the maximum of 6,650\*1 sheets to reduce overall MFP downtime caused by paper replenishment.

\*1 When optional Paper Feed Cabinet PC-410 and Large Capacity Unit LU-302 are mounted.



\* Photo shows PC-410/LU-302/FS-534 mounted

### Fiery controller

Optional Fiery Image Controller\*2 for graphics applications can produce professional and high-level printing quality environment. The Fiery's various settings can be configured by using the MFP web browser.

\*2 Optional Fiery Image Controller IC-416, Video Interface Kit VI-508 and Upgrade Kit UK-211 are required.

### Multifunction finisher

The optional finisher allows you to perform many high-level finishing such as three sheets stacked tri-fold, stapling, punching, and saddle stitching. User can produce internal documents more easily and professionally.

### Emperon printing system

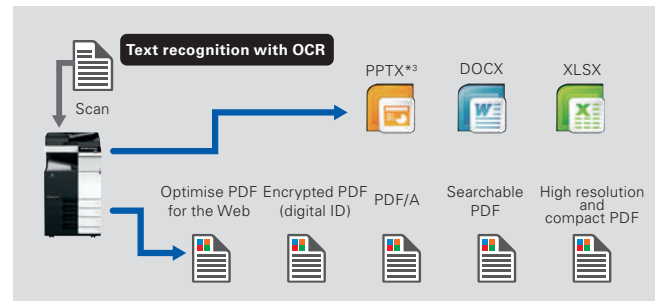
Konica Minolta's proprietary Emperon unified printing system is equipped with network printing functions as a standard feature. It provides comfort print experience in any office network environment regardless OS types.



### Documents digitalisation

Paper documents can be scanned and converted into PDF and OOXML file formats. Choose a file format suitable for your work objective. To widen the potential for documents secondary usage.

### Image of Scan to PDF and Scan to OOXML (when LK-110 v2 is mounted)



- OCR processing enables text searching.
- Images and text can be reused in applications such as Microsoft Office.

\* Optional Upgrade Kit UK-211 is required.

\*3 Although pptx conversion is a standard function of this machine, optional i-Option LK-105 v4 or LK-110 v2, and Upgrade Kit UK-211 are required to use OCR.

## Flexible and advanced security features to protect valuable information

### Authentication on the MFP main unit

Authentication can be performed directly on the main unit. Detailed access control can be set up for each function including copy, print, scan, and fax\*1.

\*1 Optional Fax Kit FK-513 is required.

### IC card authentication

To authenticate\*2 with various types of IC card\*3. The authentication method also compliance with SSFC (Shared Security Formats Cooperation) standard. Besides the IC card, authentication can also be performed with any Android devices\*4 that equipped NFC antenna.



\*2 Optional Authentication Unit AU-201S is required.

\*3 Compliant non-contact IC cards include FeliCa (IDm), SSFC, FCF, FCF (campus), FeliCa Private, and MIFARE (UID).

\*4 Requires Android 4.4 or later that supports HCE (Host Card Emulation) or PageScope Mobile for Android v4.1 or later.

### Biometric authentication

Your finger veins becomes the most accurate authentication tool. The biometric authentication is easy to implement but offer very high-level security.



\* Optional Biometric Authentication Unit AU-102 and Working Table WT-506 are required.

### HDD mirroring

Supports "Mirroring" which synchronises the main HDD data and the backup HDD data in real time. In the event of main HDD failure, operation automatically switches to the backup HDD which will drastically reduce the risk of data loss.

\* Optional HDD Mirroring Kit HD -524 is required.

### Server-less pull printing

Print jobs sent by user can be printed from any MFP in the office print group. To allows user to build a server-less pull printing system easier and with low introduction cost.

\* A pull printing system consisting of a maximum of 10 MFPs can be created. It is necessary that all corresponding MFPs be in the same network.

\* Optional i-Option LK-114 and Upgrade Kit UK-211 are required to be installed to each of the MFP.

### TPM (Trusted Platform Module)

Control the confidential information with a TPM (Trusted Platform Module) security chip which encrypts and decrypts any confidential data. The confidential information will be encrypted and stored only in the dedicated storage area in the chip. To avoid unauthorised reading from the outside.

\* Optional i-Option LK-115 v2 is required.

### Screen display enlarge and colour reversal functions

The screen display enlarge function to enlarge the text on the buttons. The screen display colour reversal function reverses the display colour while maintaining the same contrast ratio. For better visibility to help elderly users and users with low vision.



### Detachable paper cassette

Paper cassette of the MFP is detachable. Jammed paper remained inside of the MFP can be easily remove. To reduce MFP downtime.



### Environmental contribution is always the top priority

#### Usage of the recycled materials

Konica Minolta has made further advances on its unique chemical processing technology. It has also increased its use of recycled PC/PET and has raised the PCR ratio\*1 to approximately 70%. This recycled material accounts for more than 25% of the weight ratio of the total resin volume in the main unit. The ratio of recycled materials in the surface area of the machine has increased to approximately 78%.

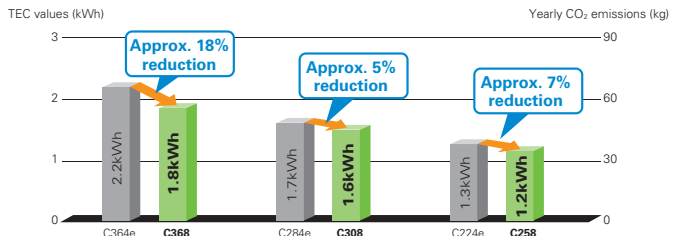
\*1 PCR (post-consumer recycling): the ratio of municipally recycled materials used in the recycled materials.



#### Top class power consumption and TEC value in its class

The MFP CPU power set to turned off during the sleep mode. This results the top class 0.5 W power consumption ratio (during the sleep mode). The TEC value has also been reduced approximately 5-18%. More CO<sub>2</sub> emissions from MFP can be reduced.

Comparison of TEC values (in Europe and other regions) of previous models (bizhub C364e/C284e/C224e) and the bizhub C368 series.



\* Values for 220-230 V  
 \* TEC values applied to the International Energy Star Program Version 2.0  
 Yearly CO<sub>2</sub> emissions:  
 TEC value × 52 weeks × emission factor  
 (From the November, 2011 press release by Japan's Ministry of the Environment.)



Model shown is C368 with options.

## bizhub c368/c308/c258

<b>C368</b> Colour B&W 36/36 ppm	<b>C308</b> Colour B&W 30/30 ppm	<b>C258</b> Colour B&W 25/25 ppm	Resolution 1,200 dpi	SRA3	Dual Scan ADF 160opm Duplex *1	Dual Scan ADF 80opm Simplex *1	Biometric Authentication *1	IC-Card Authentication *1
Empower Drive!	USB Print	Colour Internet Fax	Fax	Mobile Support	Bioplastic	Recycled PC/PET	Simitri with Biomass	

\*1 Optional

# PHOTOCOPIERS DIRECT LTD

22 Abbey Road, London NW10 7RE

www.photocopiersdirect.co.uk  
 sales@photocopiersdirect.co.uk

0800 174 293

